

A close-up photograph of a welder's face, partially obscured by a dark welding mask. The welder is wearing a red protective glove on their right hand, which is holding a welding torch. Bright, intense blue and white light emanates from the point of contact between the torch and the metal, with a dense spray of bright orange and yellow sparks flying outwards. The background is dark and out of focus.

# **METAL BASED PRODUCTS**

**PRODUCT CATALOGUE**





# Metal Based Products

Canopy Products produce stock products to the building industry on a contract and next day basis. With a 7 day turnaround on bespoke joinery products, we can help bring the finishing touches to your building projects.





# Paul Taylor

## Sales Director

The Canopy Products principle of becoming the first-choice supplier to fully satisfy customer requirements has enabled us to offer a range of building products to a growing number of customers including blue-chip organisations, major house builders right through to start-ups and one man businesses.

We now offer a comprehensive nationwide service of over 200+ stocked building products delivered next day.

*Paul Taylor*

# STANDARD CANOPY PRODUCTS

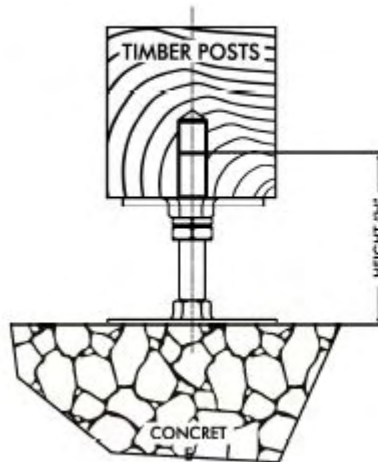
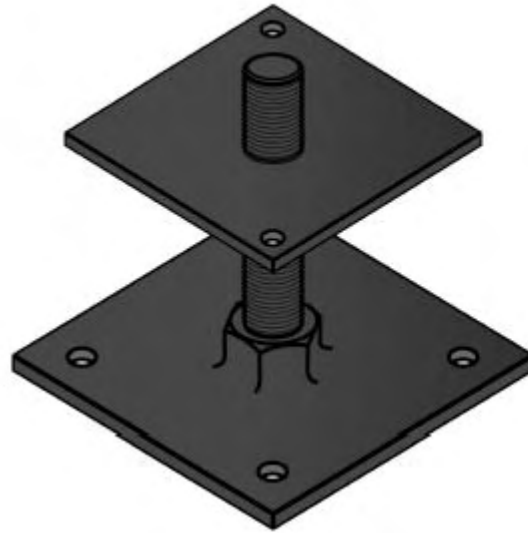
**STOCK PRODUCTS DISPATCHED THE SAME DAY.**

- DISCOUNTS APPLY FOR BULK ORDERS/TRADE.
- TERMS, PRO FORMA INVOICE, CHEQUE WITH ORDER, PAY PAL OR CREDIT CARD.
- THE GOODS AND A V.A.T. INVOICE WILL BE DISPATCHED ON RECEIPT OF PAYMENT.
- ALL OUR WOOD PRODUCTS ARE NOW TREATED WITH AN INDUSTRIAL WOOD PRESERVATIVE AS DEFINED IN BS/EN 335-1:1994. THE PRODUCT PROTECTS THE WOOD SURFACE AGAINST WOOD DESTROYING AND WOOD DISCOLOURING FUNGI AND SATISFIES THE PERFORMANCE REQUIREMENTS OF EN599-1. THIS ALLOWS THE PRODUCT TO BE STAINED/PAINTED ON SITE.
- S.W.L. IS THE SAFE WORKING LOAD FOR EACH PRODUCT
- PRICES ARE EXCLUDING PACKING, CARRIAGE AND V. A. T. PLEASE TELEPHONE FOR CARRIAGE COSTS. IF THE PRODUCT YOU NEED IS NOT LISTED, WE CAN MAKE IT TO YOUR SPECIFICATION
- OUT OF STOCK ITEMS - **PLEASE CONTACT US**
- CANOPY PRODUCTS HAS BEEN ABLE TO MAKE AND SELL FSC® CERTIFIED PRODUCTS SINCE 2010. TIMBER PRODUCTS PRE-FIXED "F" ARE FSC CERTIFIED (FSC® C109654 )

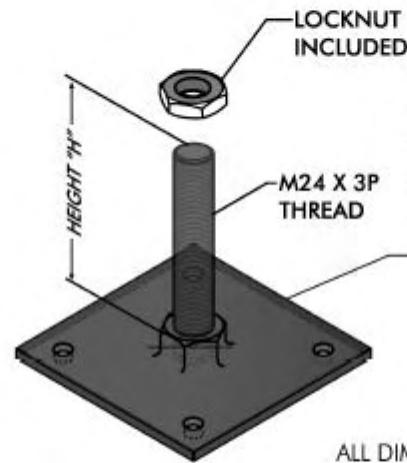
WE ACCEPT



# GR 304 STAINLESS STEEL PLATE POST BASES - HEIGHT ADJUSTABLE



CODE	PLATE SIZE	HOLES	WEIGHT
P1	80 X 80 X 6	2 OFF-DIA6	0.4 KG
P2	123 X 123 X 6	2 OFF-DIA6	0.8 KG
P3	150 X 150 X 6	2 OFF-DIA6	1.2 KG



CODE	HEIGHT "H"	PLATE SIZE	HOLES	WEIGHT	SWL
SSB1	150	150 X 150 6	4 OFF - DIA 12	1.7 KG	306 KG
SSB2	250	150 X 150 6	4 OFF - DIA 12	2.1 KG	165 KG
SSB3	330	150 X 150 6	4 OFF - DIA 12	2.4 KG	110 KG
SSB4	500	150 X 150 6	4 OFF - DIA 12	3.0 KG	52 KG

ALL DIMENSIONS IN mm

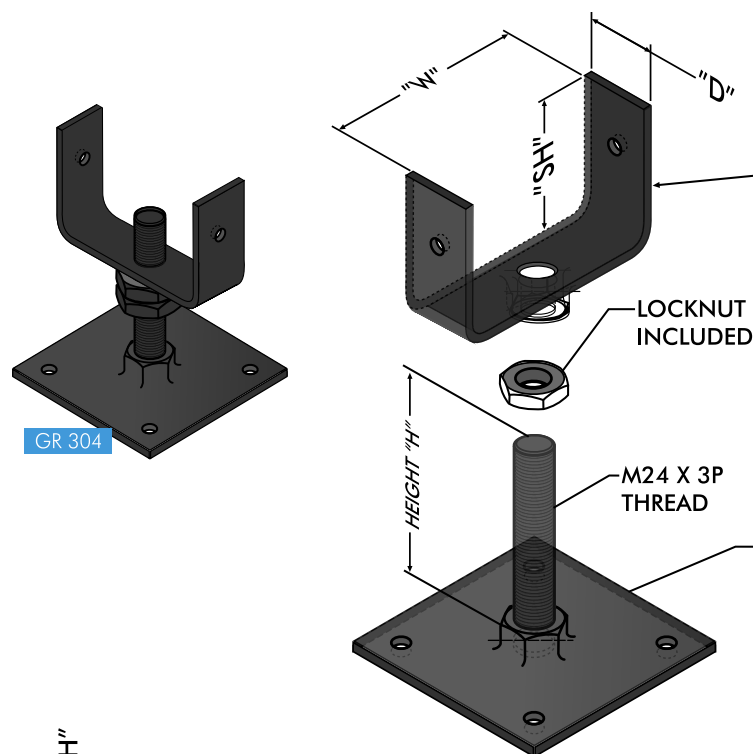
SWL ARE CALCULATED USING A FACTOR OF SAFETY OF SIX

**"MIX & MATCH" BASEPLATES (SSB) AND TOP PLATE TO SUIT YOUR REQUIREMENTS**

USE CODES FROM THE TABLES ABOVE TO COMPOSE YOUR REQUIRED ORDER CODE  
TYPICAL ORDER CODE:- SSB1S1 (M24 LOCKNUT IS INCLUDED)

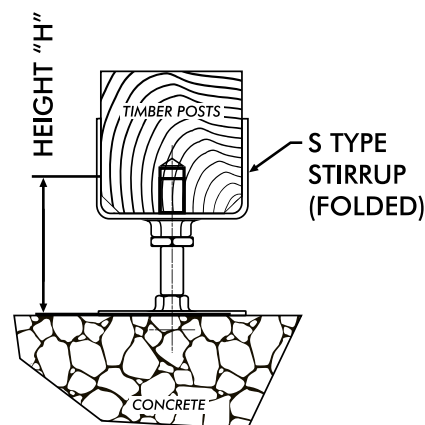
When fixing please ensure the final height position is achieved prior to locking up the the M24 locknut as stainless steel threads have a tendency to "pick up" when undone after tightening. A small amount of "copper slip" or similar anti seize lubricant on the threads withing the nut would help prevent threads "pick up".

# GR 304 STAINLESS STEEL PLATE STIRRUP BASES - HEIGHT ADJUSTABLE



CODE	"SH"	"W"	"D"	HOLES	WEIGHT
S1	80	94	50	2 OFF-DIA11	0.7 KG
S2	120	144	50	2 OFF-DIA11	0.9 KG
S3	120	194	70	2 OFF-DIA11	1.4 KG

CODE	HEIGHT "H"	PLATE SIZE	HOLES	WEIGHT	SWL
SSB1	150	150 X 150 X 6	4 OFF - DIA 12	1.7 KG	306 KG
SSB2	250	150 X 150 X 6	4 OFF - DIA 12	2.1 KG	165 KG
SSB3	330	150 X 150 X 6	4 OFF - DIA 12	2.4 KG	110 KG
SSB4	500	150 X 150 X 6	4 OFF - DIA 12	3.0 KG	52 KG



**SCAN QR CODE  
TO VISIT OUR  
METAL BASES  
RANGE**



ALL DIMENSIONS IN mm

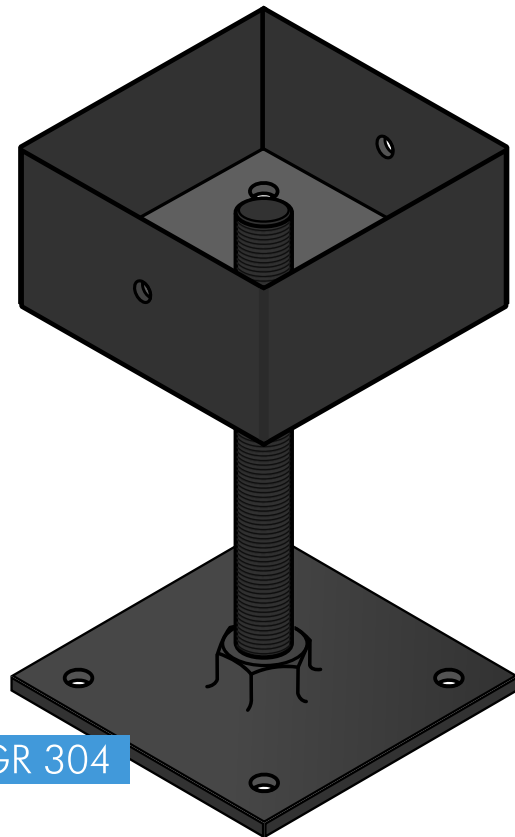
SWL ARE CALCULATED USING A FACTOR OF SAFETY OF SIX

**"MIX & MATCH" BASEPLATES (SSB) AND STIRRUP (S) TO SUIT YOUR REQUIREMENTS**

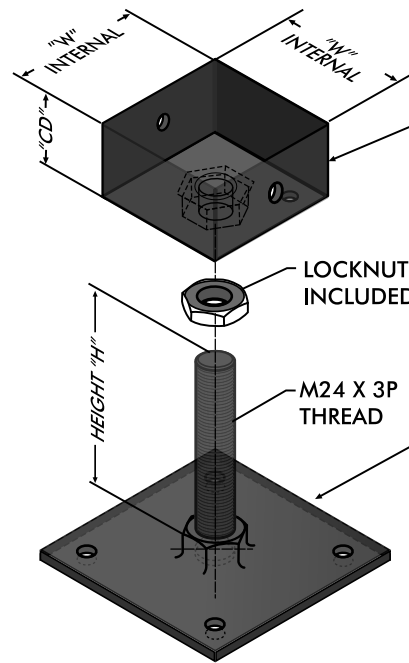
USE CODES FROM THE TABLES ABOVE TO COMPOSE YOUR REQUIRED ORDER CODE  
TYPICAL ORDER CODE:- SSB1S1 (M24 LOCKNUT IS INCLUDED)

When fixing please ensure the final height position is achieved prior to locking up the the M24 locknut as stainless steel threads have a tendency to "pick up" when undone after tightening. A small amount of "copper slip" or similar anti seize lubricant on the threads withing the nut would help prevent threads "pick up".

# GR 304 STAINLESS STEEL PLATE CUP POST BASES - HEIGHT ADJUSTABLE

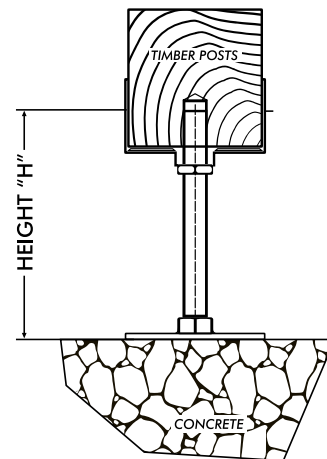


GR 304



CODE	"CD"	"W"	HOLES	WEIGHT
C1	60	94	2 OFF DIA 7	0.7KG
C2	80	144	2 OFF DIA 11	1.6KG

CODE	HEIGHT "H"	PLATE SIZE	HOLES	WEIGHT	SWL
SSB1	150	150 X 150 X 6	4 OFF - DIA 12	1.7 KG	306 KG
SSB2	250	150 X 150 X 6	4 OFF - DIA 12	2.1 KG	165 KG
SSB3	330	150 X 150 X 6	4 OFF - DIA 12	2.4 KG	110 KG
SSB4	500	150 X 150 X 6	4 OFF - DIA 12	3.0 KG	52 KG



ALL DIMENSIONS IN mm

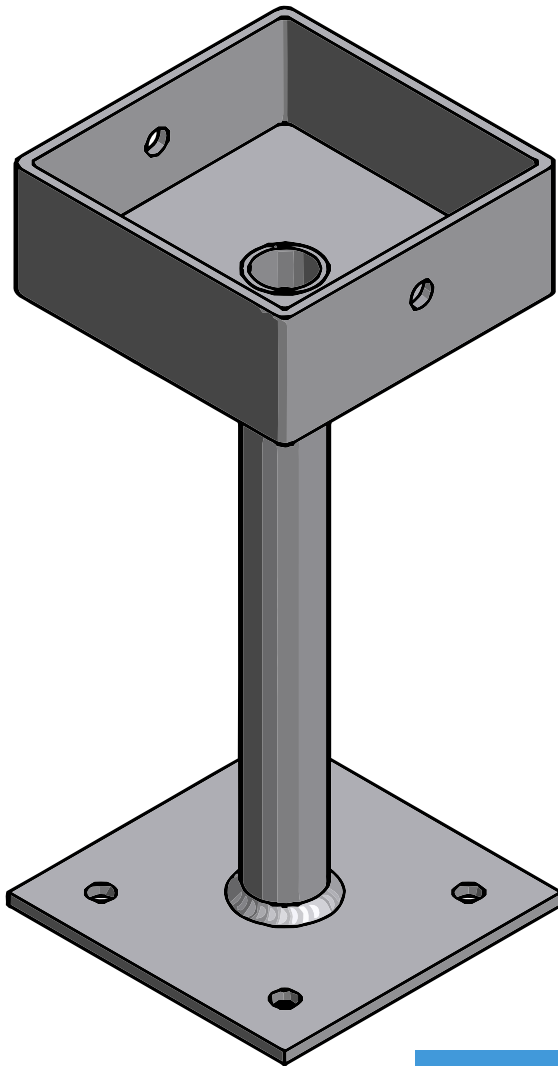
SWL ARE CALCULATED USING A FACTOR OF SAFETY OF SIX

"MIX & MATCH" BASEPLATES (SSB) AND CUPS TO SUIT YOUR REQUIREMENTS

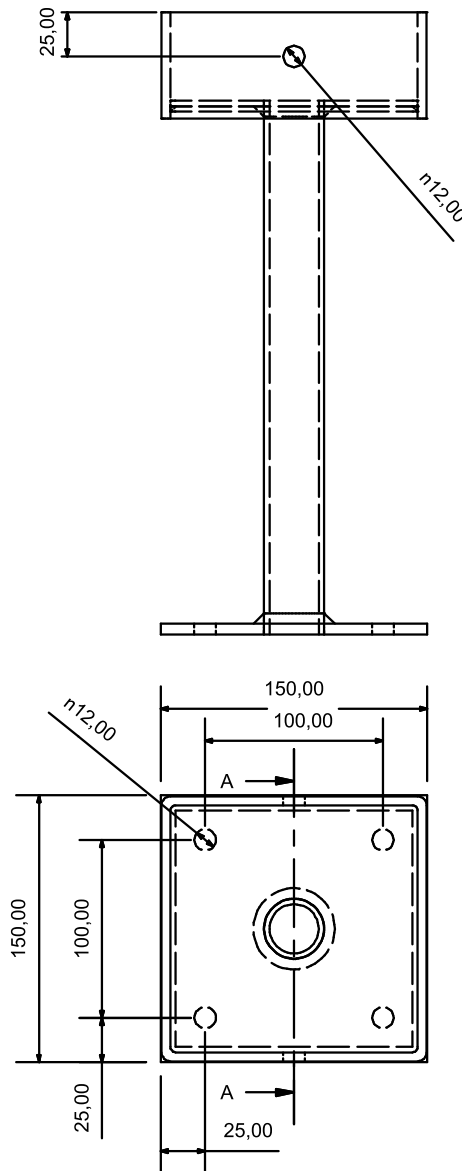
USE CODES FROM THE TABLES ABOVE TO COMPOSE YOUR REQUIRED ORDER CODE  
TYPICAL ORDER CODE:- SSB1S1 (M24 LOCKNUT IS INCLUDED)

When fixing please ensure the final height position is achieved prior to locking up the the M24 locknut as stainless steel threads have a tendency to "pick up" when undone after tightening. A small amount of "copper slip" or similar anti seize lubricant on the threads within the nut would help prevent threads "pick up".

# SSBA STAINLESS STEEL PLATE CUP POST BASE



SSBA

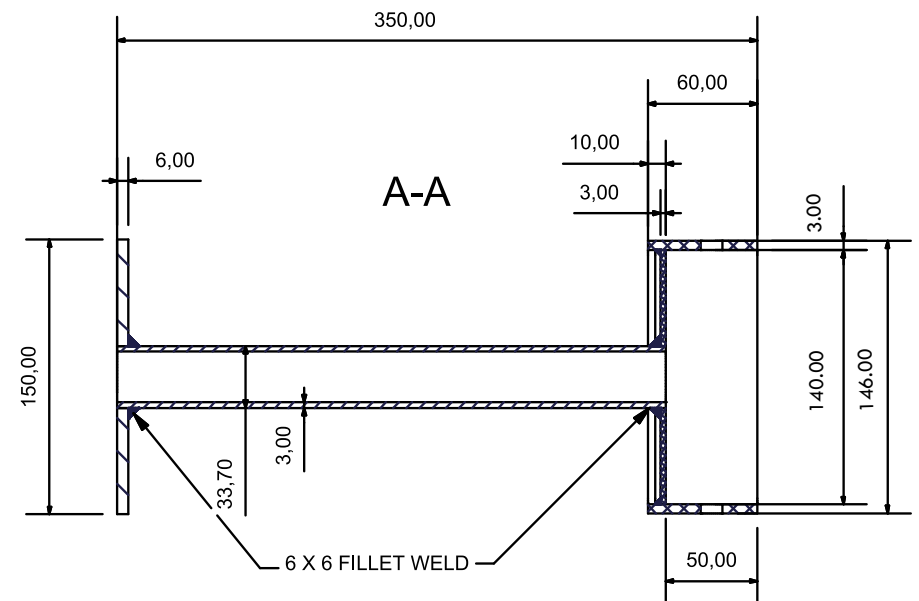


## SSBA STAINLESS STEEL PLATE CUP POST BASE (TO TAKE A 139MM X 139MM POST ACCOYA)

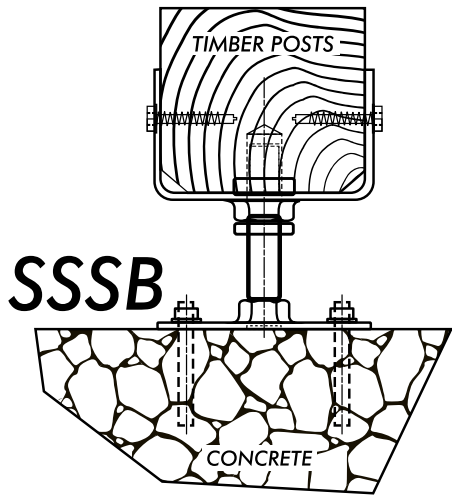
OUR RANGE OF STAINLESS STEEL POST BASES ARE DESIGNED TO BE RESISTANT TO EXTREME EXPOSURE TO THE ELEMENTS. BY KEEPING THE TIMBER POST ABOVE THE GROUND LEVEL OUT OF THE DAMP AREAS AND ALLOWING THE POST FOOT TO DRY OUT AFTER RAIN IT HELPS PREVENT DECAY AND PROLONG THE LIFE OF THE POST.

BOTTOM PLATE 150MM X 150MM, CUP 60MM HIGH, POST CUP INTERNAL 139MM X 139MM, SWL , WEIGHT 2.5KG-SSBA

## SPECIFICALLY DESIGNED FOR OUR ACCOYA RANGE OF POSTS



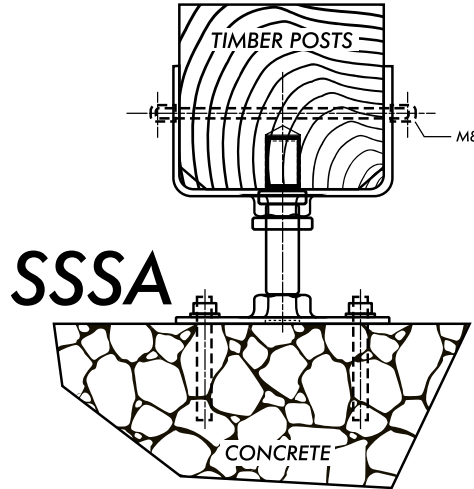
# STAINLESS STEEL PLATE, CUP & STIRRUP POST BASE FIXING OPTIONS



**SSSB**

## FIXING KIT SSSB

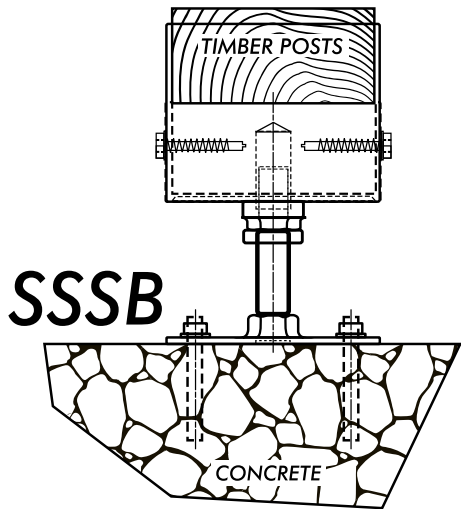
X 2 SS COACH SCREWS, M10 X 30MM OR 50MM DEPENDENT ON STIRRUP WIDTH + 4 X M10 80MM SS THRU-BOLT



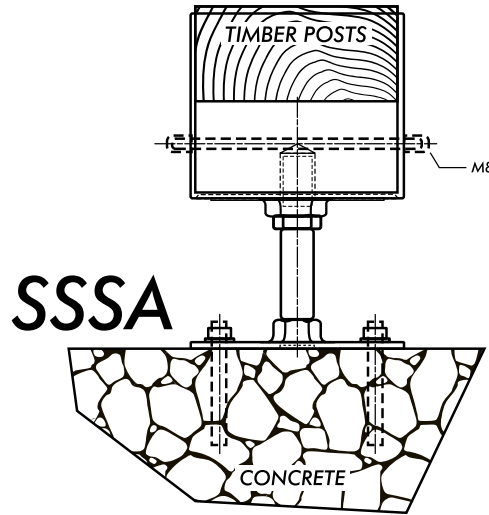
**SSSA**

## FIXING KIT SSSA

X 2 M8 SS DOMED NUTS + M8 THREADED BAR TO SUIT STIRRUP WIDTH + X4 NO M10 80MM SS THRU-BOLT



**SSSB**

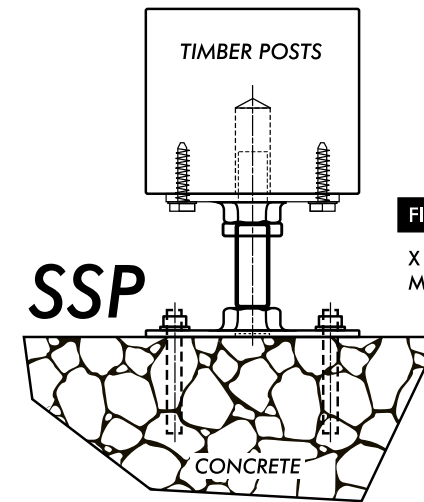


**SSSA**

## RECOMMENDED FASTENERS FOR POST BASE RETENTION

CODE	DESCRIPTION
SSSB	STIRRUP FIXING PACK
SSSA	STIRRUP FIXING PACK
SSSB	CUP FIXING PACK
SSSA	CUP FIXING PACK
SSP	PLATE FIXING PACK

WHEN FIXING PLEASE ENSURE THE FINAL HEIGHT POSITION IS ACHIEVED PRIOR TO LOCKING UP THE THE M24 LOCKNUT AS STAINLESS STEEL THREADS HAVE A TENDANCY TO "PICK UP" WHEN UNDONE AFTER TIGHTENING. A SMALL AMOUNT OF "COPPER SLIP" OR SIMILAR ANTI SEIZE LUBRICANT ON THE THREADS WITHING THE NUT WOULD HELP PREVENT THREADS "PICK UP".



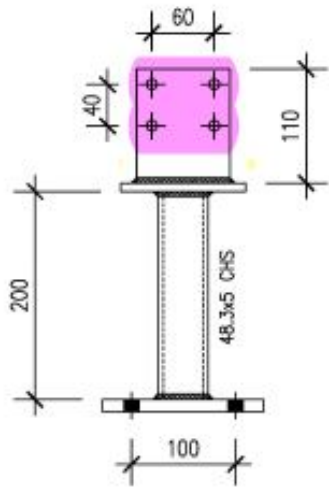
**SSP**

## FIXING KIT SSP

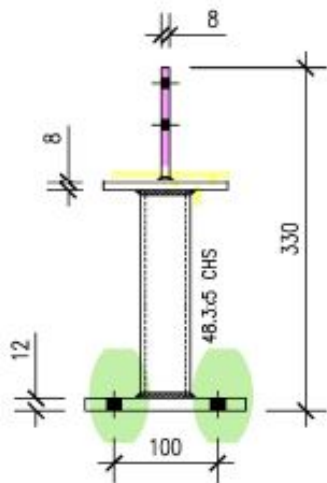
X 4 SS M10 THRU-BOLTS, X 2 SS POZI FLANGE M4 WOOD SCREW



# GR 304 STAINLESS STEEL BRUSHED STEEL VERTICAL PLATE POST BASE - SSBFHO

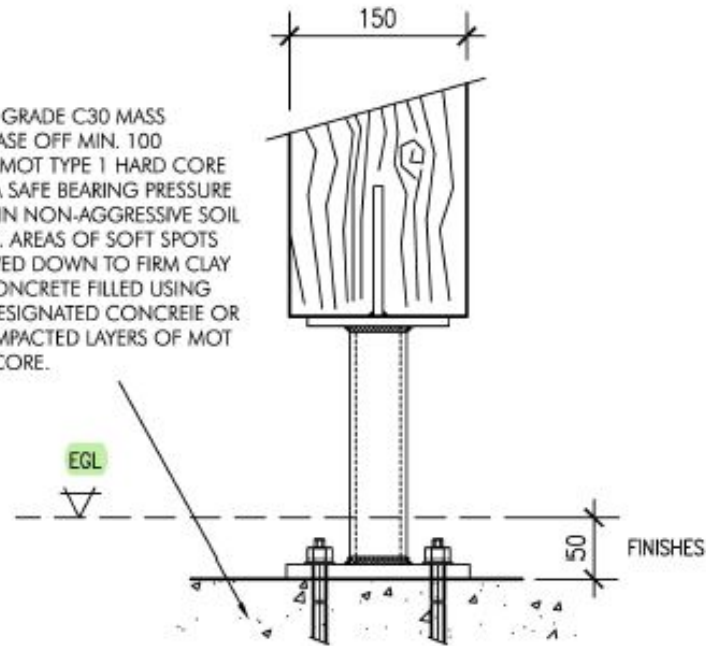


SIDE ELEVATION



FRONT ELEVATION

650x650x300 GRADE C30 MASS CONCRETE BASE OFF MIN. 100 COMPACTED MOT TYPE 1 HARD CORE TO ACHIEVE A SAFE BEARING PRESSURE OF 30kN/m<sup>2</sup> IN NON-AGGRESSIVE SOIL CONDITIONS. AREAS OF SOFT SPOTS TO BE REMOVED DOWN TO FIRM CLAY AND MASS CONCRETE FILLED USING MIN. GENT DESIGNATED CONCRETE OR MAX 150 COMPACTED LAYERS OF MOT TYPE 1 HARDCORE.



FOUNDATION DETAIL

**FIN. PLT.**  
90X110X8 THK.  
5CFW  
4 NO. 10Ø HOLES  
15 EDGE DISTANCE

**48.3x5 CHS BASE PLT.**  
120X120X8 THK.  
5CFW

**48.3x5 CHS BASE PLT.**  
155x155x12 THK.  
5CFW  
4 NO. 14Ø HOLES AT 100 C/C  
28 EDGE DISTANCE  
FOR 4 NO. M12 STAINLESS STEEL STUD ANCHORS INSTALLED IN STRICT ACCORDANCE WITH MANUFACTURERS INSTRUCTIONS.

SCAN THE QR CODE TO VISIT MORE METAL PRODUCTS ONLINE

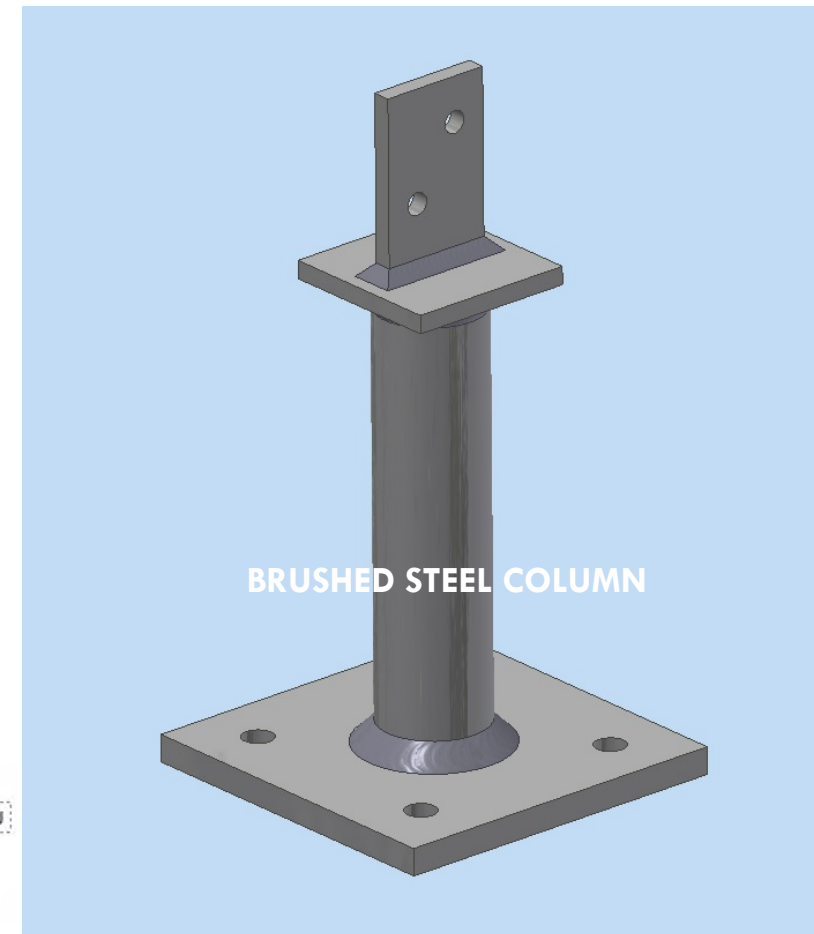
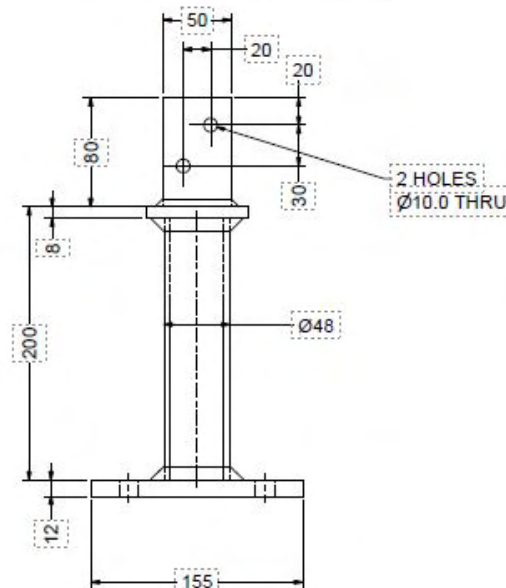
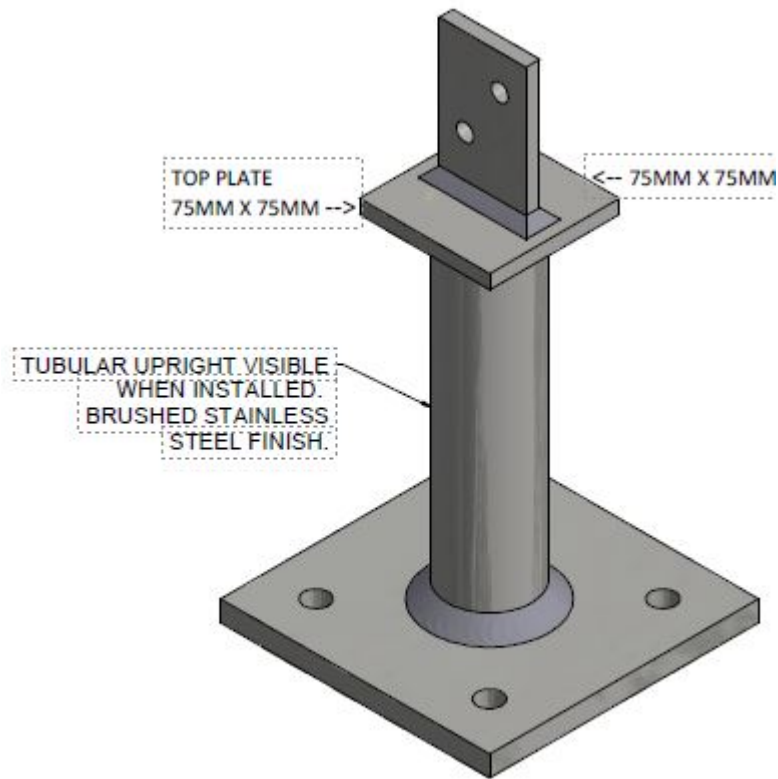
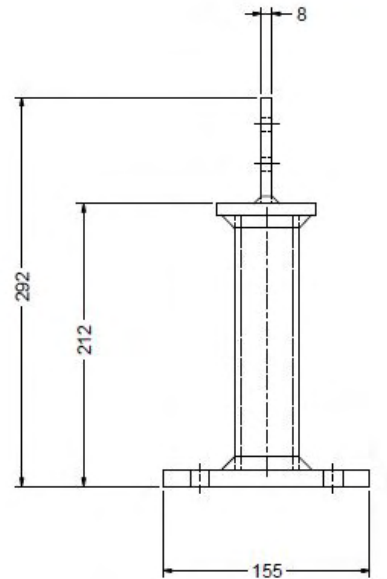
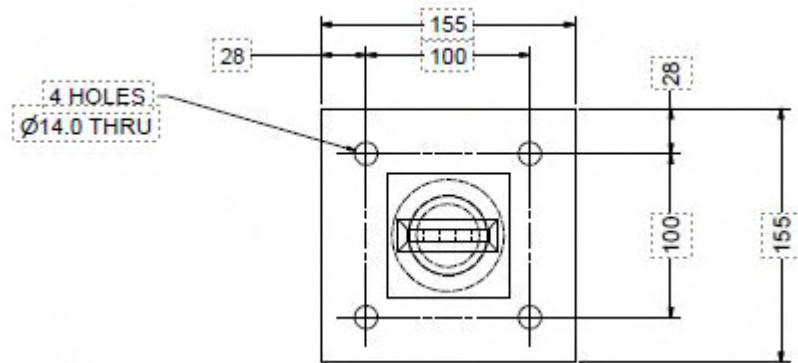


BRUSHED STEEL COLUMN

**SSBFHO**

**FIXING KITS AVAILABLE**

## GR 304 STAINLESS STEEL BRUSHED STEEL VERTICAL PLATE POST BASE - SSB-FH100



**SWL:1 000kg**

# SSB-FH100

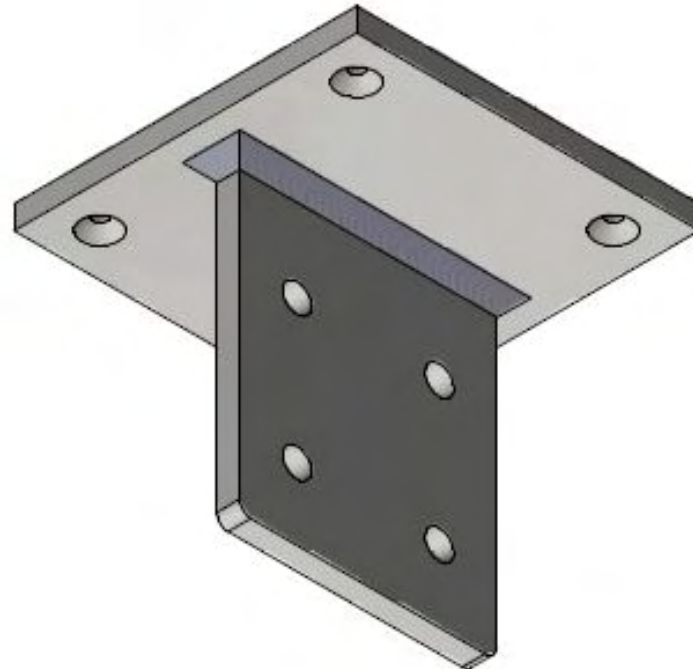
## FIXING KITS AVAILABLE

# GR 304 STAINLESS STEEL VERTICAL POST TOP FIXING BRACKET - PTBSS-2

DESIGNED TO BE USED WITH TIMBER  
ENGINEERED BUILDINGS / PORCHES.

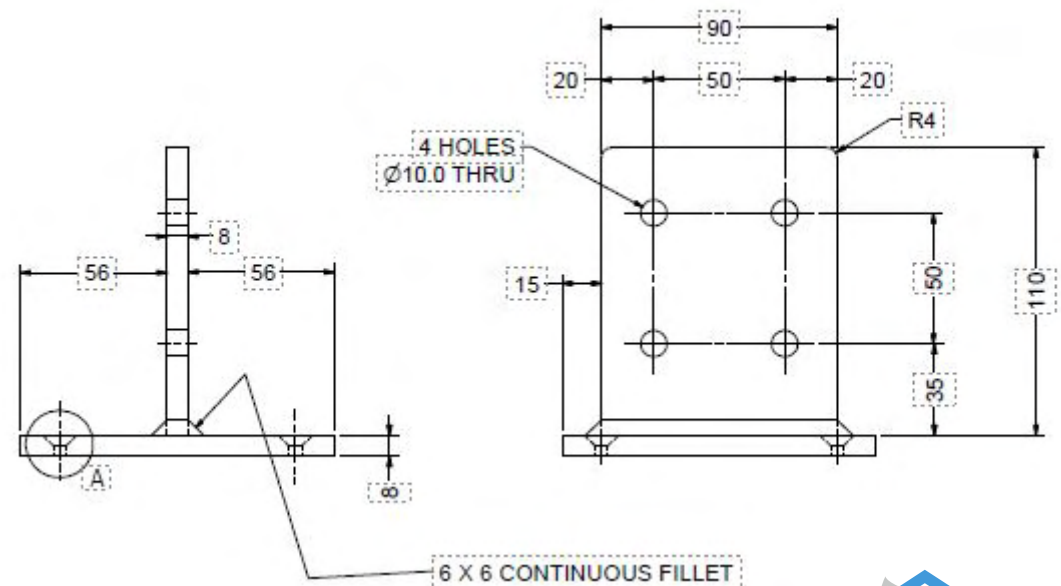
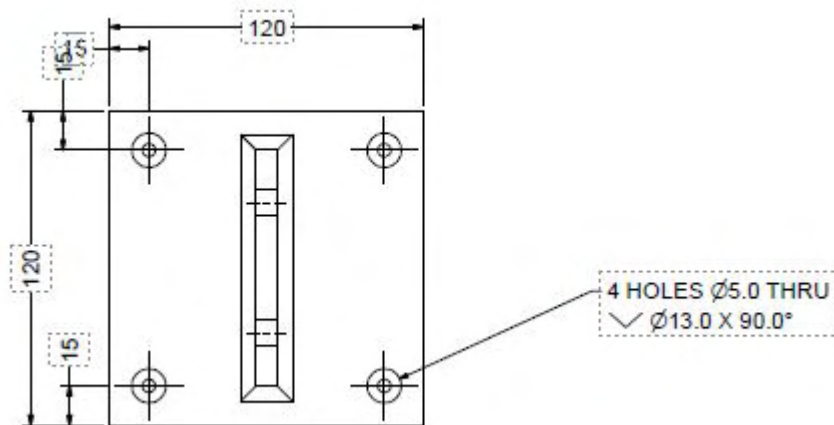
THE **PTBSS-2** AS A TOP PLATE OF 120mm x  
120mm WITH A FIN POSITIONED CENTRAL  
110mm x 90mm.

4 HOLES ALLOW THE FIN PLATE TO BE  
DOWELLED










SUITABLE FOR A POST SIZE  
MINIMUM 100mm x 100mm

FIXING KIT AVAILABLE





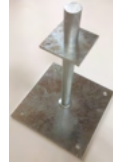

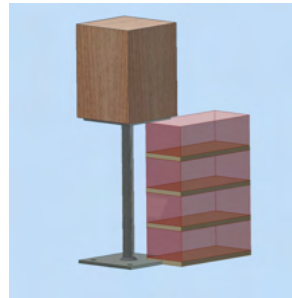
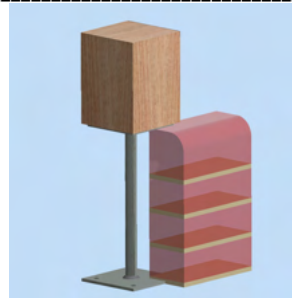

# GALVANISED MILD STEEL POST BASES

PRODUCT CODE	POST FLANGE HEIGHT ABOVE BASE	BASE PLATE SIZE	S.W.L KN / KG	POST SIZE SUITABLE FOR	
GSS-A	300MM	150 X 150	25KN/2549KG	100 X 100	
Gsf-PIN	130MM	90 X 90	39KN/3976KG	100 X 100	
Gsf-PIN0	100MM	150 X 150	1000KG	100 X 100 / 125 X 125	
Gsf-PIN1	100MM	150 X 150	1000KG	150 X 150 / 200 X 200	
Gsf-PIN2	146MM	150 X 150	63KN/6424KG	150 X 150 / 200 X 200	
Gsf-PIN4	354MM	150 X 150	19KN/1937KG	150 X 150 / 200 X 200	
Gsf-PIN5	300MM	150 X 150	19KN/1937KG	150 X 150 / 200 X 200	

PDF DRAWINGS AVAILABLE TO DOWNLOAD ON THE WEBSITE

FIXING KITS AVAILABLE

# GALVANISED MILD STEEL POST BASES

PRODUCT CODE	POST FLANGE HEIGHT ABOVE BASE	BASE PLATE SIZE	S.W.L KN / KG	POST SIZE SUITABLE FOR	
GSF-PIN6	254MM	225 X 225	5.56KN/567KG	88 X 88 / 100 X 100	
GSF-PIN75	130MM	90 X 90	17.16KN/1750KG	88 X 88 / 100 X 100	
GSF-PIN-5-BC4	312MM (4 BRICK COURSE)	150 X 150	750KG	150 X 150 / 200 X 200	
GSF-PIN-5-BC3	346MM (3 BRICK COURSE AND BULL NOSED BRICK)	150 X 150	750KG	150 X 150 / 200 X 200	
GSF-S1 (STIRRUP)	300MM	150 X 150	TO BE CONFIRMED	150 X 150	

PDF DRAWINGS AVAILABLE TO DOWNLOAD ON THE WEBSITE

FIXING KITS AVAILABLE

SEE OUR WEB SITE FOR CURRENT PRICES AND A MORE EXTENSIVE RANGE OF PRODUCTS. [WWW.CANOPYPRODUCTS.CO.UK](http://WWW.CANOPYPRODUCTS.CO.UK)

# GGB - GALVANISED MILD STEEL GALLOWS BRACKETS

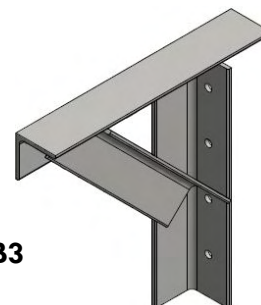
PRODUCT CODE	PRODUCT DESCRIPTION	SIZE & DIMENSIONS - MM	S.W.L
GGB1	GALVANISED GALLOWS BRACKET	380 X 380 X 50 - (50x50x5mm ANGLE WELDED CONSTRUCTION)	1 TONNE TC22058
GGB2	GALVANISED GALLOWS BRACKET	480 X 480 X 50 - (50x50x5mm ANGLE WELDED CONSTRUCTION)	1 TONNE TC22058
GGB3	GALVANISED GALLOWS BRACKET	380 X 380 X 75 - (75x75x5mm ANGLE WELDED CONSTRUCTION)	2 TONNE TC22059
GGB4	GALVANISED GALLOWS BRACKET	480 X 480 X 75 - (75x75x5mm ANGLE WELDED CONSTRUCTION)	2 TONNE TC22059



GGB1



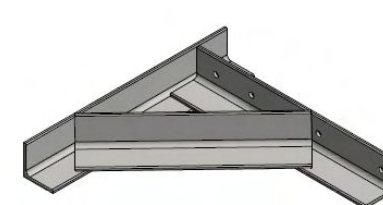
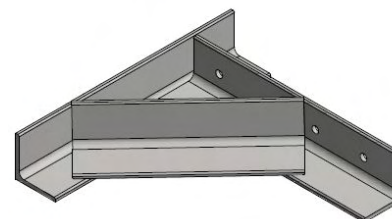
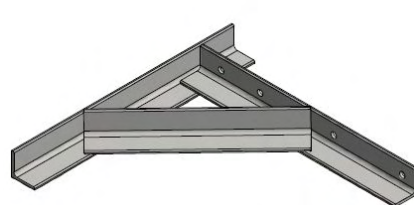
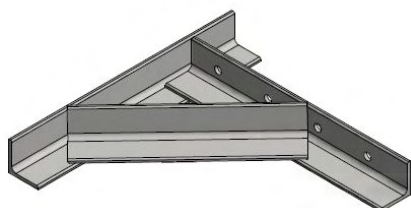
GGB2



GGB3



GGB4



GALVANISED MILD STEEL SUPPORT GALLOWS BRACKETS FOR REMOVAL OF INTERNAL CHIMNEY BREAST SUPPORTING THE CHIMNEY STACK.  
RECOMMENDED TO USE EITHER LINTEL OR ANGLE IRON PLATE BETWEEN BRACKETS

PLEASE SEE INDIVIDUAL LOCAL AUTHORITY PLANNING FOR ADVICE. FIXINGS ARE NOT INCLUDED.

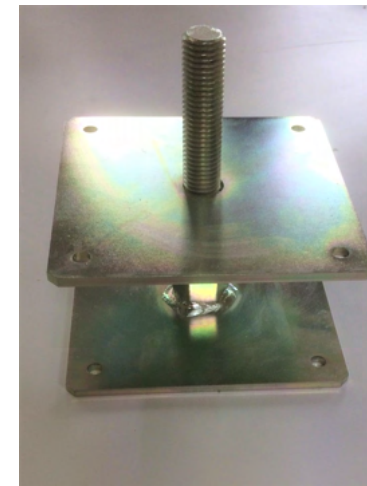
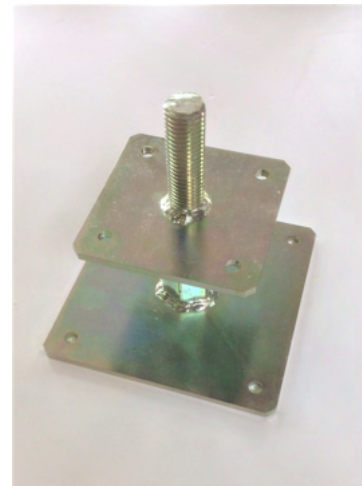
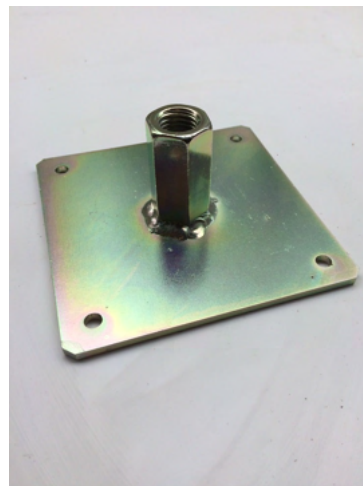
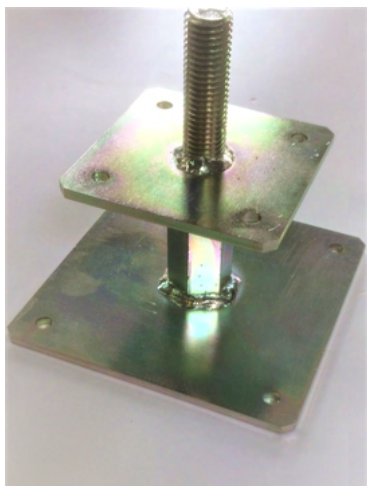
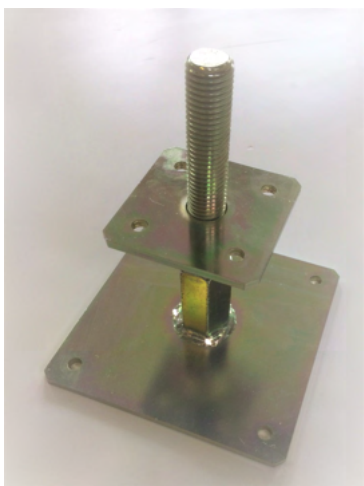
THIS INFORMATION IS FOR GUIDANCE ONLY AND WE ARE NOT RESPONSIBLE FOR ANY BUILDING WORK THAT IS CARRIED OUT



# ELECTROPLATED MILD STEEL ADJUSTABLE POST BASES

PRODUCT CODE	TYPE	PLATE SIZE	S.W.L KN / KG	POST SIZE SUITABLE FOR
APB1-BP	BASE PLATE - <b>NEEDED WITH EACH TOP PLATE</b>	150 X 150		
APB1-TP	TOP PLATE	80 X 80	3.53KN/360KG	90 X 90 / 100 X 100
APB2-TP	TOP PLATE	100 X 100	4.74KN/483KG	125 X 125 / 150 X 150
APB3-TP	TOP PLATE	123 X 123	4.9KN/500KG	150 X 150 / 170 X 170
APB4-TP	TOP PLATE	150 X 150	5.72KN/583KG	180 X 180 / 200 X 200

MAX HEIGHT OF THE TOP FLANGE IS 125MM. MINIMUM IS 73MM



PDF DRAWINGS AVAILABLE TO DOWNLOAD ON THE WEBSITE

FIXING KITS AVAILABLE

SEE OUR WEB SITE FOR CURRENT PRICES AND A MORE EXTENSIVE RANGE OF PRODUCTS. [WWW.CANOPYPRODUCTS.CO.UK](http://WWW.CANOPYPRODUCTS.CO.UK)

# STANDARD DESIGN CANOPY PRODUCTS SPECIFICATION

## MATERIAL

ALL WOOD PRODUCTS CONSTRUCTED FROM V16s GRADE SWEDISH RED DEAL UNLESS OTHERWISE STATED.

## JOINTS

STOPPED MORTISE AND TENON GLUE & PINNED.

## FINISH

PLANED ALL ROUND TIMBER. ALL CURVED SURFACES BANDSAWN AND SPINDLE MOULDER PLANNED TO PROFILE. BEVELS 10mm AND 12mm ACROSS THE FLATS. ALL SEEN SURFACES ARE TWICE SANDED (80s GRIT AND 100s GRIT) SANDPAPERS.

## ASSEMBLY

GLUED COMPONENTS HAND ASSEMBLED, PNEUMATICALLY CLAMPED. ALL JOINTS SECURED WITH HEADLESS ALUMINIUM PINS.

## TREATMENT AND PREPERATION

OUR TIMBER PRODUCTS ARE INSPECTED FOR FAULTS, DEAD KNOTS AND SHAKES ARE FILLED USING POLYESTER TWO PACK RESIN FILLER. ALL OUR WOOD PRODUCTS ARE NOW TREATED WITH AN INDUSTRIAL WOOD PRESERVATIVE AS DEFINED IN BS/EN 335-1:1994. THE PRODUCT PROTECTS THE WOOD SURFACE AGAINST WOOD DESTROYING AND WOOD DISCOLOURING FUNGI AND SATISFIES THE PERFORMANCE REQUIREMENTS OF EN599-1. THIS ALLOWS THE PRODUCT TO BE STAINED/PAINTED ON SITE.

## PACKAGING

PRODUCTS BANDED, CORNER PROTECTED AND CLING FILM WRAPPED.

## DELIVERY

NEXT DAY DISPATCH ON ALL STOCK PRODUCTS USING A NATIONAL CARRIER, WITHIN 30 WORKING DAYS FOR LARGE AND SPECIAL PRODUCTS.

## STRUCTURAL SUITABILITY

SAFE WORKING LOADS ARE STATED AND STENCELED ONTO MOST OF OUR STUCTURAL PRODUCTS, CALCULATIONS SHOULD BE OBTAINED TO CHECK THE SUITABILITY OF THE PRODUCT FOR YOUR APPLICATION.



## Howard Smith

**Operations Director**

We are extremely proud of the team spirit here at Canopy, and we extend this approach to our relationships with clients. Excellent customer service has been rewarded by exceptional customer loyalty. Customer satisfaction is the key to our success and we are proud of our ability to deliver a wide range of building solutions on time and on budget to the highest standards. We take pride in that all our products are manufactured in the UK ensuring we monitor the quality.



Address:  
Canopy Products Ltd  
Blackwood Mill  
Blackwood Road  
Bacup  
Lancashire  
OL13 0PZ

Email:  
[sales@blackwoodmillgroup.co.uk](mailto:sales@blackwoodmillgroup.co.uk)

Website:  
[www.canopyproducts.co.uk](http://www.canopyproducts.co.uk)

Contact:  
Tel: 01706 82 26 65  
Fax: 01706 82 33 33

# STANDARD CANOPY PRODUCTS

**STOCK PRODUCTS DISPATCHED THE SAME DAY.**

- WE RESERVE THE RIGHT TO ALTER WITHOUT NOTICE, THE DIMENSIONS, SECTION, DESIGN OR CONFIGURATION OF ANY OF THE PRODUCTS LISTED IN THIS BROCHURE, IN THE INTEREST OF PRODUCT IMPROVEMENT.
- FOR A FULL RANGE OF PRODUCTS THAT ARE AVAILABLE, CONTACT US FOR A BROCHURE OR DOWNLOAD THEM ONLINE.

[WWW.CANOPYPRODUCTS.CO.UK](http://WWW.CANOPYPRODUCTS.CO.UK)





